



MARKET PLACE SEMINAR

INLAND HUBS: KEY TOWARDS
RAIL FREIGHT
CORRIDOR DEVELOPMENT

RFC Rhine-Alpine

Contributions to growth of
rail freight on the corridor

Christiane Warnecke

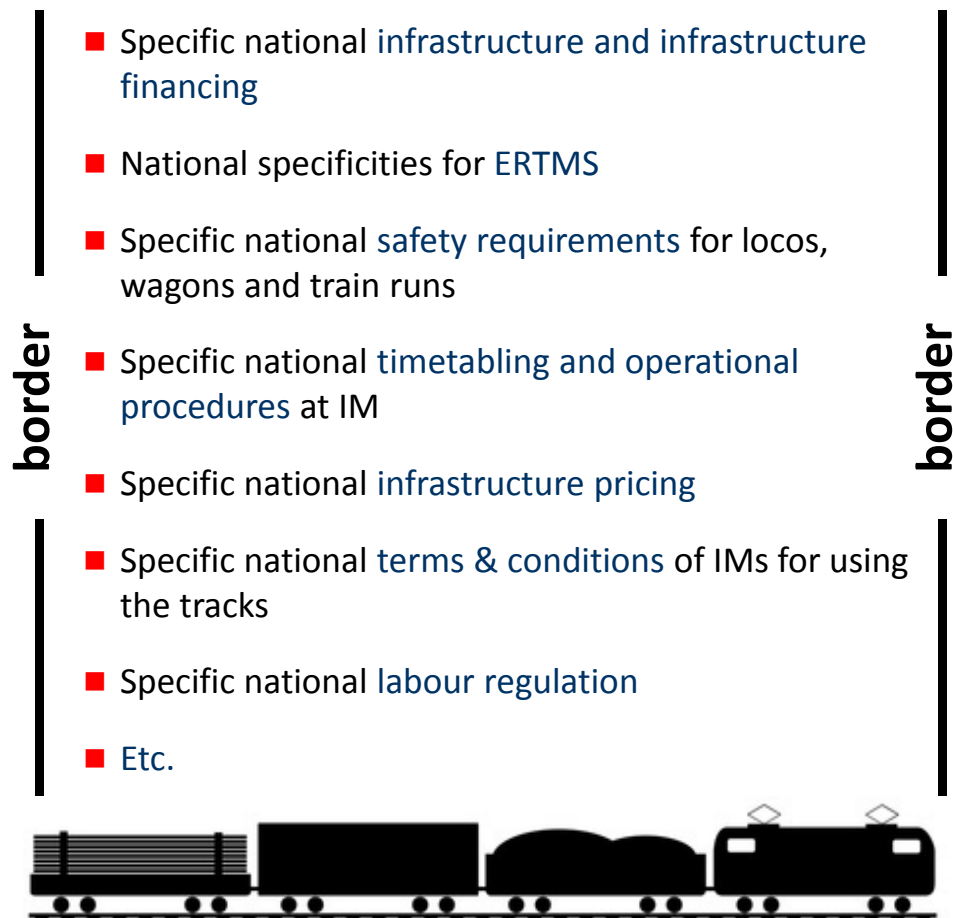


DUISBURG, GERMANY
14-15 SEPTEMBER 2017

The international rail freight market is far from seam-less operations – complexity as major cost driver

Current situation for rail freight undertakings on the European network

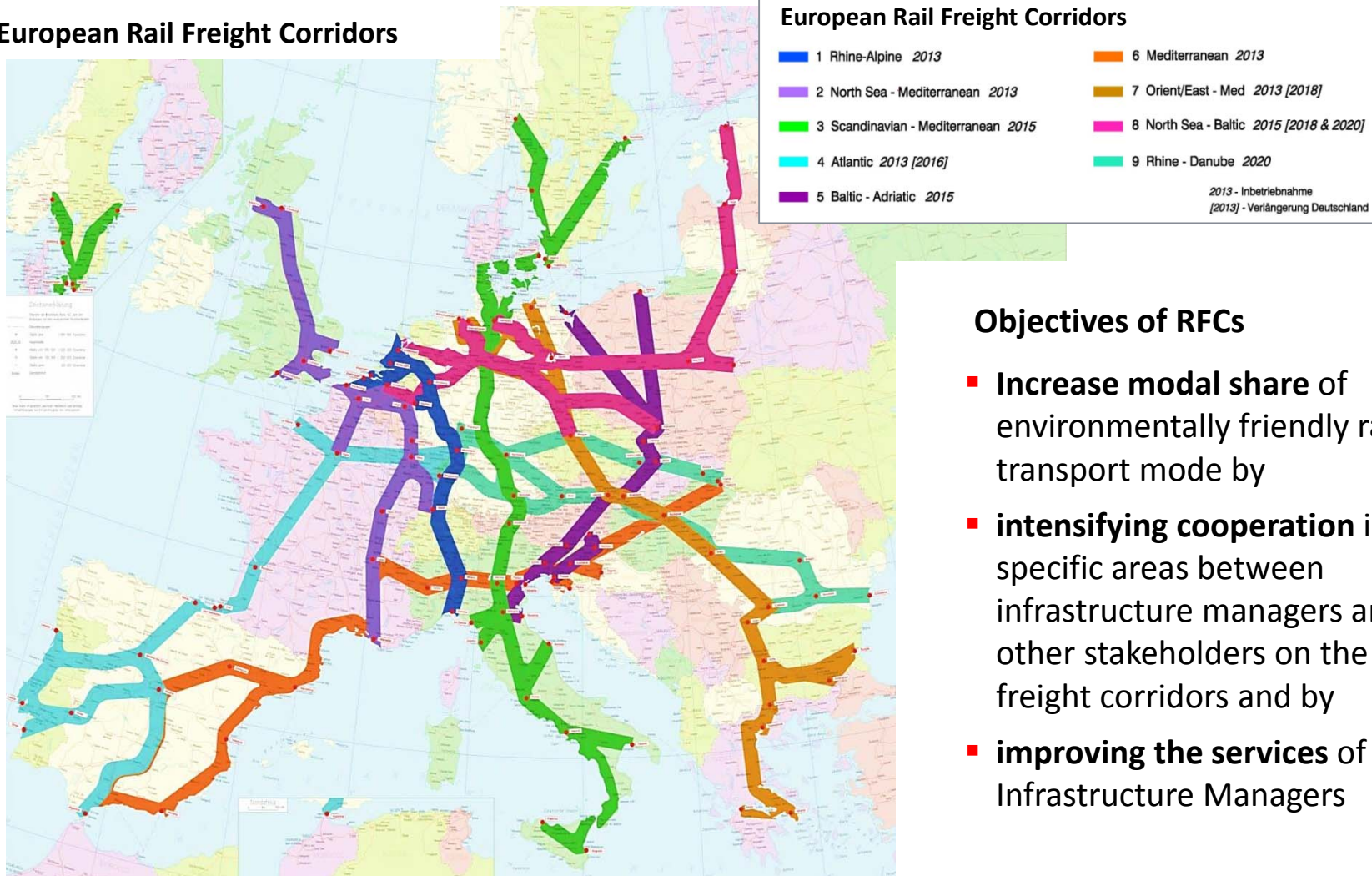
Each country / Infrastructure Manager of each country



- International rail freight customers have to manage very complex frameworks and procedures, usually without proper IT support
- This complexity is a major cost driver
- Changes can often only be made in cooperation between Transport Ministries, NSAs, IMs and RUs
- Situation similar for trans-continental corridors – on an much larger scale?

Nine Rail Freight Corridors are implemented in Europe – based on EU Regulation 913/2010

European Rail Freight Corridors



Objectives of RFCs

- **Increase modal share** of environmentally friendly rail transport mode by
- **intensifying cooperation** in specific areas between infrastructure managers and other stakeholders on the rail freight corridors and by
- **improving the services** of Infrastructure Managers

The Regulation 913/2010 addresses core processes of IMs

Core elements (EU) 913/2010



Infrastructure



Timetable



Sales



Operations



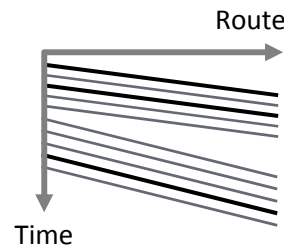
Maintenance



Investment plan to resolve bottlenecks and to deploy **inter-operability systems** (both indicative)



Pre-Arranged Pathes/ PAP and Capacity



Single point of contact **Reserve for customers: Corridor One-Stop-Shop (C-OSS)**



Common objectives for **punctuality and traffic management**



Coordination and publication of **construction work** on corridors



The regulatory framework set by the EU is a starting point—
further development/ iterative learning is needed

- RFCs provide a **platform** for intensive and broad **co-operation** of national infrastructure managers
- The initial implementation approach described in the regulation is **neither fully in line with customer needs** nor with requirements of infrastructure managers for **optimizing the use of tight capacity**
- Market-oriented solutions require **iterative and interactive learning** of IMs and RUs.
- Infrastructure Managers do not only rely on European legislation, but understand their own **responsibility for integrating corridors** into a competitive European network for rail freight
- For many improvements the **active support from national Transport Ministries, National Safety Agencies, ERA and EU** is needed

The CEOs of RFC Rhine-Alpine have just confirmed their commitment to a number of focus topics



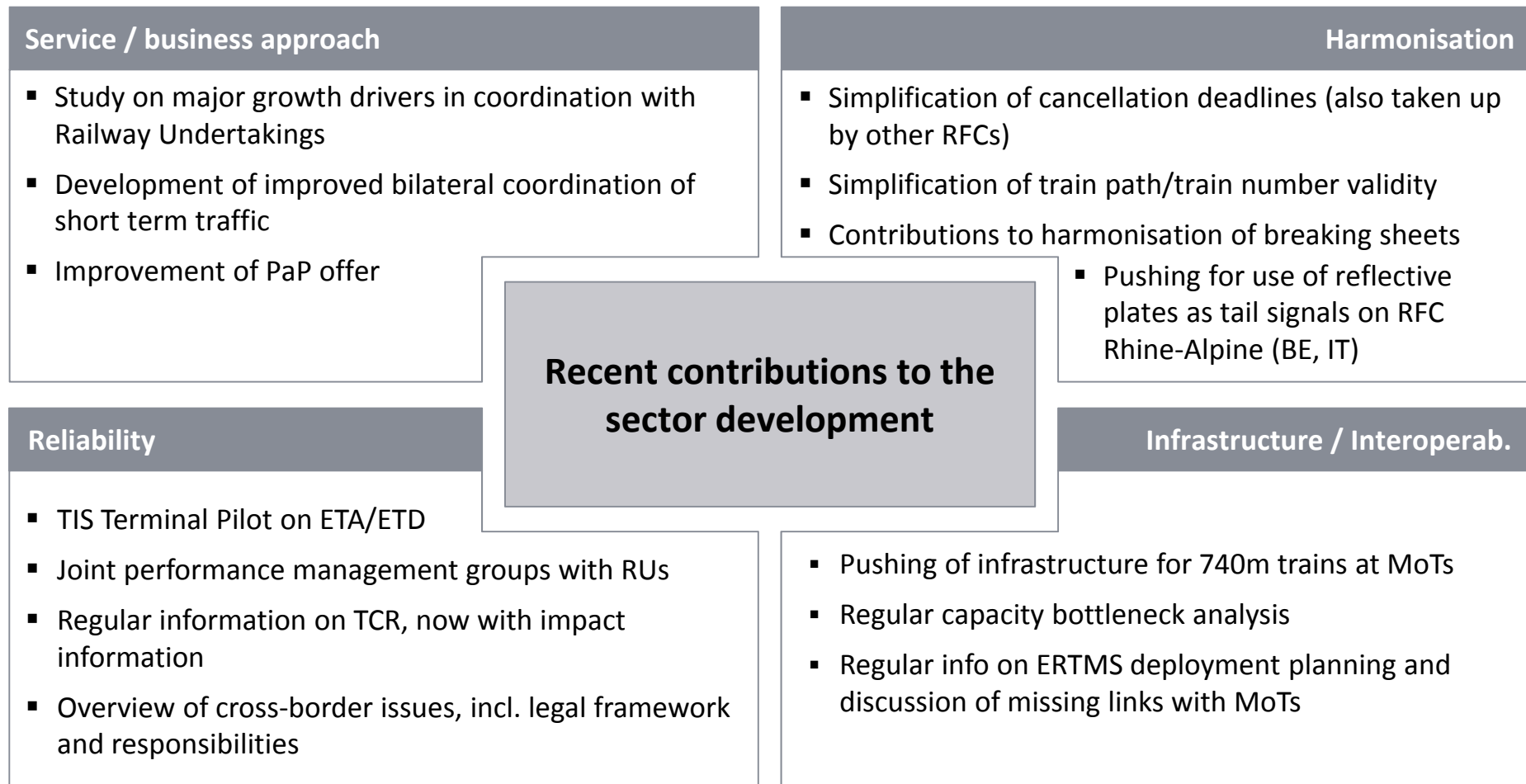
RFC RALP MoU 2017

- Confirmation of support to the Sector Statement
- Focus on the most important topics under the influence of the IMs, that are also crucial for the upcoming ERTMS/ infrastructure development
- Yearly Action Plan

Priorities from Sector Statement		Part of MoU
Planning	Timetable revision project (TTR)	
	International path offer	<input type="checkbox"/>
	Temporary capacity restrictions (TCR)	<input type="checkbox"/>
	Path coordination system (PCS) and process and quality of coordination	<input type="checkbox"/> *
Operations	Cross-border interoperability	<input type="checkbox"/>
	Estimated time of arrival (ETA)	<input type="checkbox"/>
Infrastructure Investments	TEN-T requirements	<input type="checkbox"/>
	ETCS roll-out	<input type="checkbox"/>
Governance	KPIs and performance	<input type="checkbox"/>
	Harmonisation CID	

* Process and quality of coordination integrated into topic „International path offer“

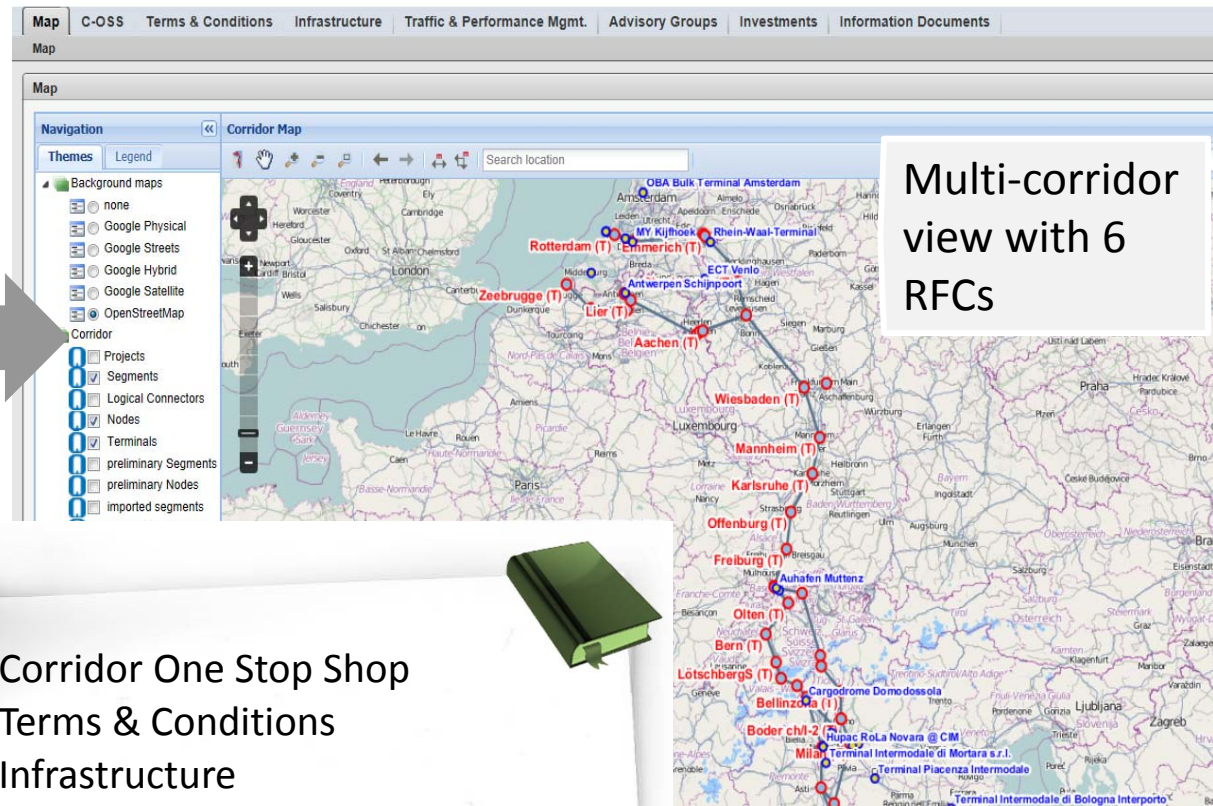
RFC Rhine-Alpines recent contributions to development of international rail freight on the corridor



Please visit our website where we give comprehensive information: <http://www.corridor-rhine-alpine.eu/>



Customer Information Platform (CIP)



Multi-corridor view with 6 RFCs

CIP



- Corridor One Stop Shop
- Terms & Conditions
- Infrastructure
- Performance Management
- Advisory Groups
- Investments
- GTC / Information Document

Thank you for your attention!