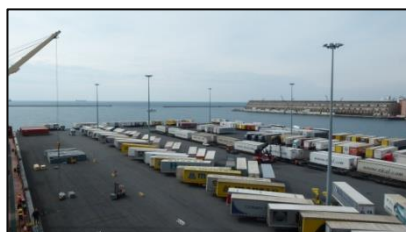
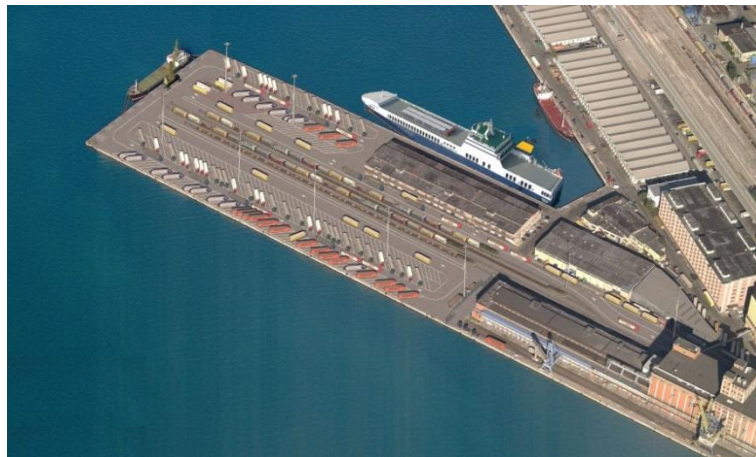


EMT has been established by the Parisi Group ([www.francescoparisi.com](http://www.francescoparisi.com)) in the year 2010 as a spin off of its terminal operation division.

EMT operates Pier 6 in the port of Trieste with a 25 years concession (2010 – 2034)



## EUROPA MULTIPURPOSE TERMINALS (EMT) S.R.L. PORT OF TRIESTE

Punto Franco Nuovo, Molo VI – 34123 TRIESTE (TS)

Tel. +39 040 3220333  
Fax +39 040 3224484  
E-mail [info@emterminals.com](mailto:info@emterminals.com)  
VAT Nr. IT01188930323

## INTERCHANGE

- SEA
- RAIL
- ROAD



- EMT employs 40 staff
- EMT is equipped with
  - 4 Reachstackers with piggy-back
  - 10 Mafi ro-ro tractors
  - over 20 fork lifts
  - 1 Terminal Diesel Locomotor
- Located in the centre of the Port of Trieste, its main features are:
  - 70.000 sqm total area
  - 1.500 m berths
  - 1 RO-RO berth
  - draft 29' to 33'
  - 4 rail tracks
  - 1 warehouse of 5.000 sqm

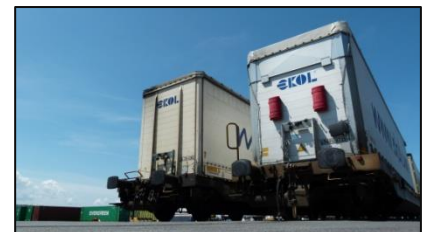
## MAIN ACTIVITIES

- RoRo serving Pier VI
  - Trieste – Istanbul (Haidarpasha) 3 x week



Other Ro-Ro services in other terminals available for Igoumenitsa (GR) – Patrai (GR) – Pendik (TR) – Tekirdag (TR) – Cesme (Izmir, TR) – Mersin (TR) – Durres (AL)

- Intermodal rail connections Trieste Pier VI
  - Köln Eifeltor (DE) 10 x week
  - Ludwigshafen (DE) 7 x week
  - Ludwigshafen/Frankfurt a.M. (DE) 3 x week
  - Bettembourg (LUX) 3 x week
  - Ostrava (CZ) 2 x week
  - Munich (DE) 3 x week



Other intermodal services available from the Port of Trieste to Munich – Wien – Budapest – Salzburg – Milano – etc.